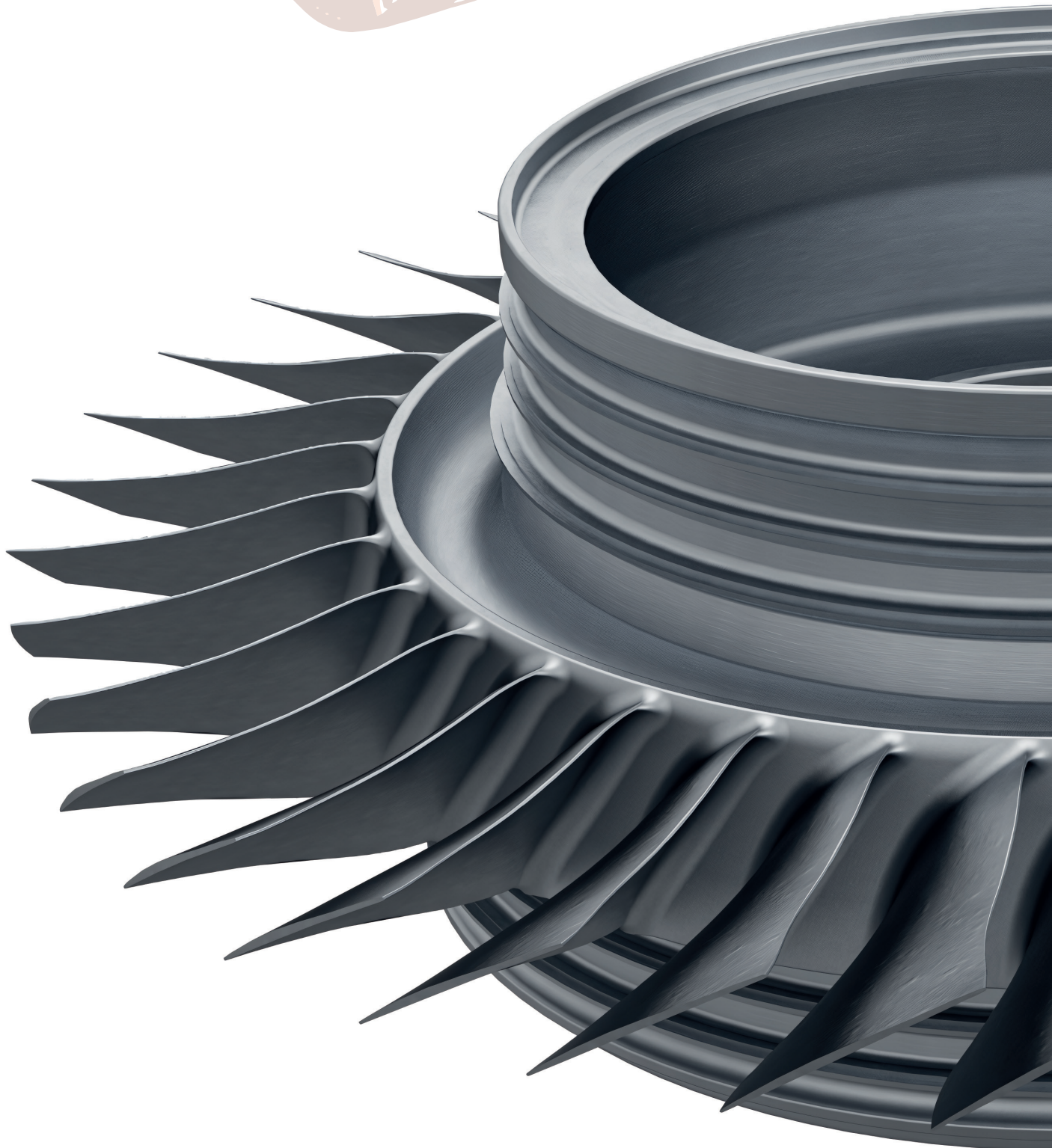




# GERARD

**POLY · MOULDINGS**

*an AIM MRO Holdings Company*

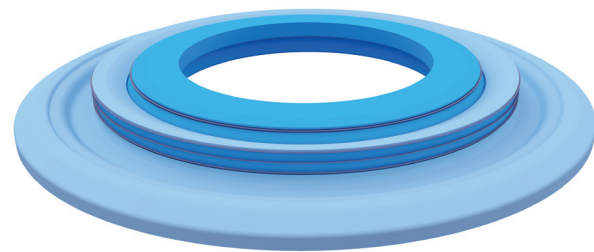


Founded in 1986, Gerard Poly Mouldings provides specialised expertise dedicated to the design and manufacture of masking products for aero and industrial gas turbine engines. These masking products enhance productivity, lower costs, and provide repeatability by virtue of re-usable moulds.

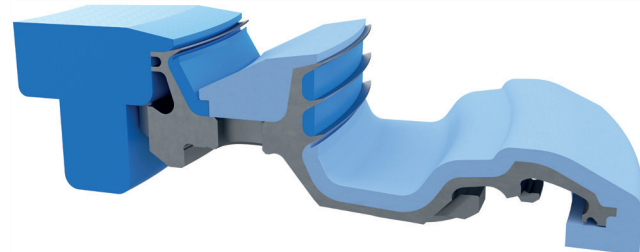
The Company is entirely self-sufficient with product design, tool manufacture, moulding and inspection all being carried out in-house to ensure a consistently high standard of product quality.

Our objective is, simply, to provide our customers with a service that is unequalled in our specialised field. By speaking the same language as our customers – engineer to engineer – we aim to develop long term relationships where we are accessible for on-site visits to discuss masking applications.

**We supply masking for all commercial engines produced by CFM International, General Electric, Rolls Royce and Pratt & Whitney.**



PLASMA SPRAY



At GPM we understand that masking applications aren't always one-size-fits all solutions. Whatever your needs, we can design and manufacture bespoke masking solutions of any size up to Ø1400mm (55").



SHOT PEENING

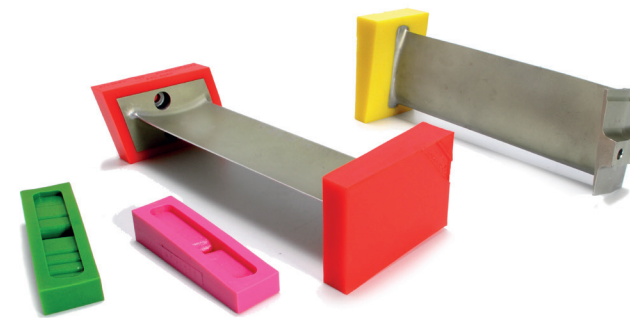


Using reusable masks in the manufacture and maintenance of aero and gas turbines offers many virtues that can significantly enhance efficiency and quality compared to traditional methods involving tape masking. These masks are exceptionally durable and resilient, capable of withstanding the rigorous demands of gas turbine maintenance tasks and can endure multiple uses without degradation, reducing the need for frequent replacements and minimizing waste in the process.

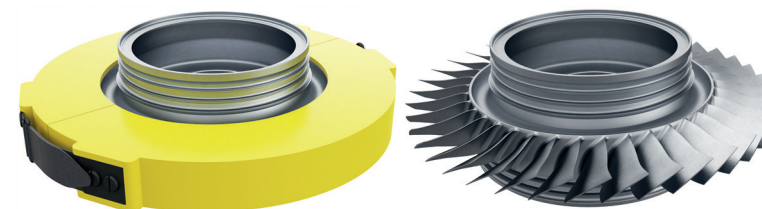
Our masks are precision-engineered to conform perfectly to the specific components they protect, ensuring consistent and uniform coverage during processing. This level of precision not only enhances the quality of the maintenance work but also reduces the likelihood of errors or inconsistencies that can occur when manually applying tape.



BLASTING



PAINTING



PROTECTION

Additionally, the time-saving aspect of using reusable masking cannot be overstated. Our masking can streamline processes, eliminating the need for labour-intensive taping procedures which not only reduces labour costs but also allows maintenance teams to complete their tasks more efficiently, ultimately minimizing downtime and ensuring that engines are returned to service in peak condition. The virtues of using reusable masks during gas turbine repair processes are clear: durability, precision, and time savings all contribute to more effective and cost-efficient maintenance practices in the gas turbine industry.

# GERARD



Please contact us if you would like to receive product sheets of our full range of commercial masking.

CALL +44 (0) 115 972 6540 EMAIL [sales@gpm-masking.com](mailto:sales@gpm-masking.com)

[WWW.GPM-MASKING.COM](http://WWW.GPM-MASKING.COM)

Gerard Poly Mouldings, Ranson Road, Chilwell, Nottingham, NG9 6DX, UK



ISO9001 Accredited



An AIM MRO Holdings Company